

Integrating research, big data analytics and evaluation to achieve sustainable impact

OUR VISION YOUR FUTURE

THE HORN OF AFRICA RESEARCH PARTNER

SC**FIELD**
ASSOCIATES LIMITED

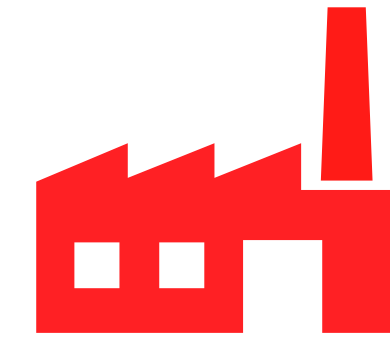


We provide quality services that meets the expectations of our partners and clients. We endeavour to build long-term relations that contribute to mutual prosperity and sustainability.

“

**OUR WORK IN COMMUNITIES IS
INTENTIONAL AND PARTNERSHIPS
ARE CRUCIAL**

WORD FROM THE DIRECTOR



WE ALWAYS STRIVE TO BE THE
HORN OF AFRICA RESEARCH
PARTNER.



Muliru Yoni
Director

We support the African Union thematic proposals for the Year 2020.

2020 is a year filled with opportunity and challenges in equal measure. It resonates with deliverable checkpoints for the deliberations made in previous years.

This year the G20 summit plans its 15th meeting in Riyadh. Internationally, the global community marks the 25th anniversary of the 4th World Conference on Women and adoption of the Beijing Declaration and Platform for Action (1995). Climate change and the 2030 agenda for sustainable development will also be discussed in this year. The African Union (AU) is also keen on the conflict in Africa with an annual theme that is focused on silencing the guns. On the other hand, COVID – 19

threatens to erode the development gains in the Horn of Africa and globally.

At Scofield Associates, we provide research informed data to support policy development and planning. We endeavor to contribute to global discussions by working with partners and clients to explore new opportunities and respond to the challenges. We understand the 4th revolution and the impact of Big Data. We are combining our resources and focusing on Big-Data Analytics, to provide quality service to our partners and clients.

I want to thank you for believing in our idea and supporting our vision.



OUR SERVICES

We are dedicated to providing you with the best from Research, Big Data Analytics and Evaluation to achieve sustainable Impact.

WORKING NINE COUNTRIES IN THE HORN OF AFRICA

OUR MAIN SERVICES

HORN OF AFRICA RESEARCH PARTNER



IT IS VITAL FOR ORGANISATIONS TO USE DATA IN IDENTIFYING EXISTING GAPS AND OPPORTUNITIES



MORE AT:

WWW.SCOFIELDASSOCIATES.CO.KE



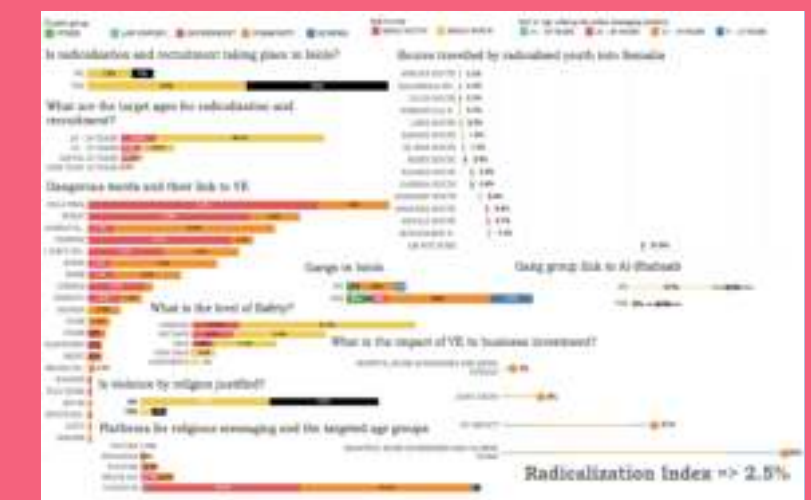
CONFLICT MANAGEMENT CONSULTING

Our service is anchored on lessons learned, local dynamics and contextual understanding.



MARKET RESEARCH

Our offering improves access to services delivery and investment gains through information sharing

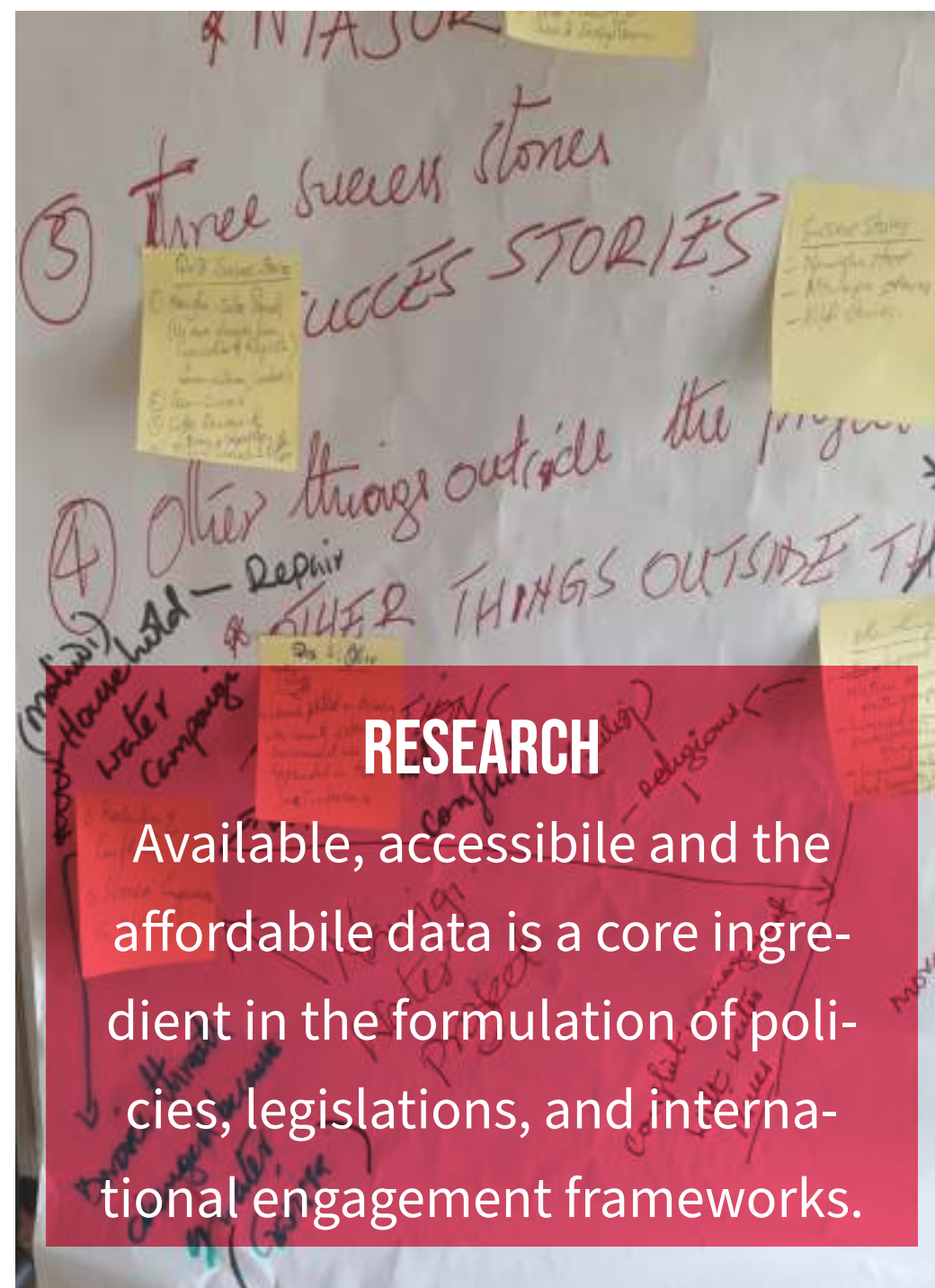


BIG DATA ANALYTICS

We provide gains from analytics ranging from; trend analysis, cost reduction and forecasting.

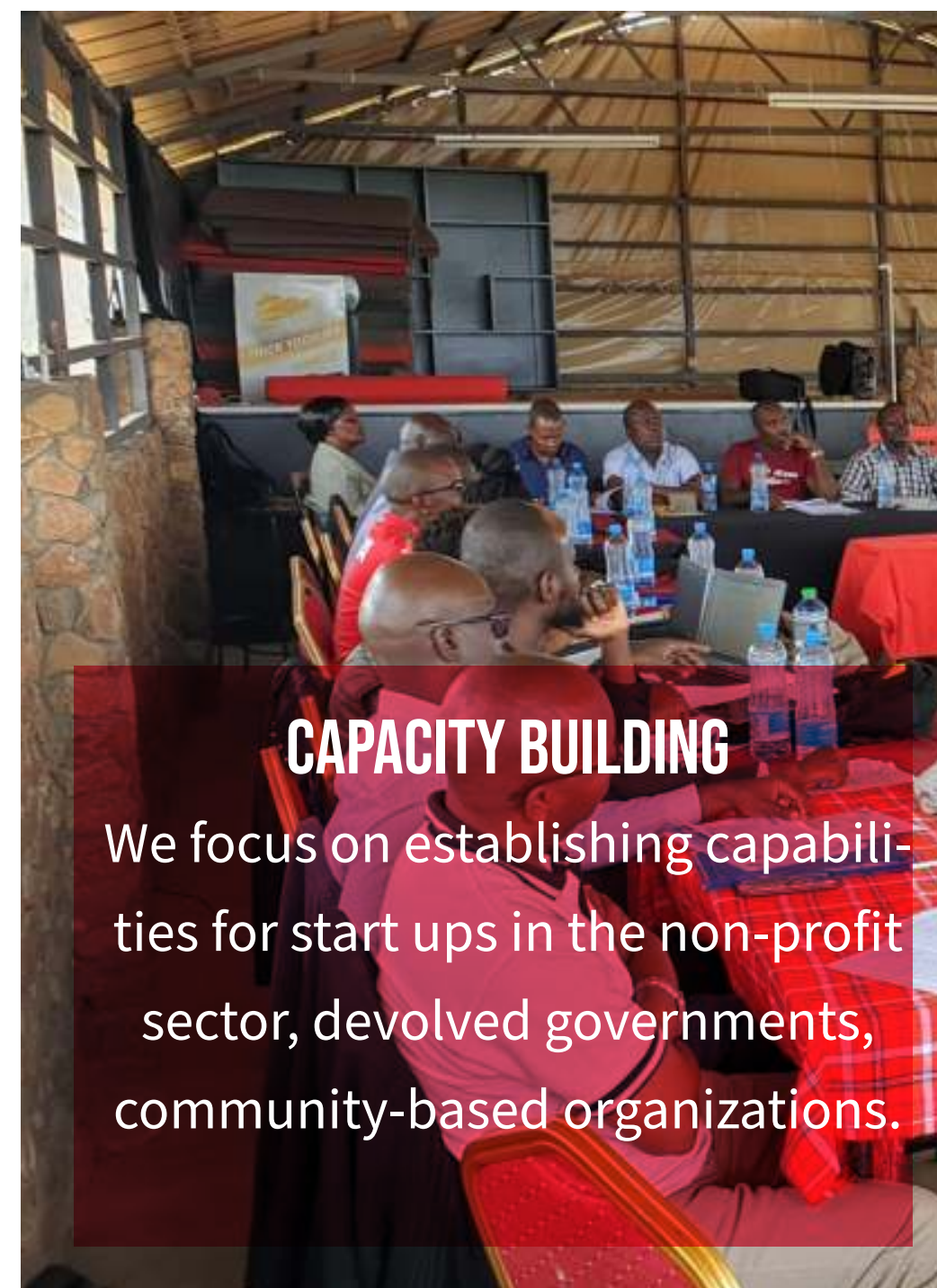
OUR OFFERING

Scofield Associates has invested in the necessary human resource, technology and partnerships that build on knowledge and evidence-base for sustainable solution provision.



RESEARCH

Available, accessible and the affordable data is a core ingredient in the formulation of policies, legislations, and international engagement frameworks.



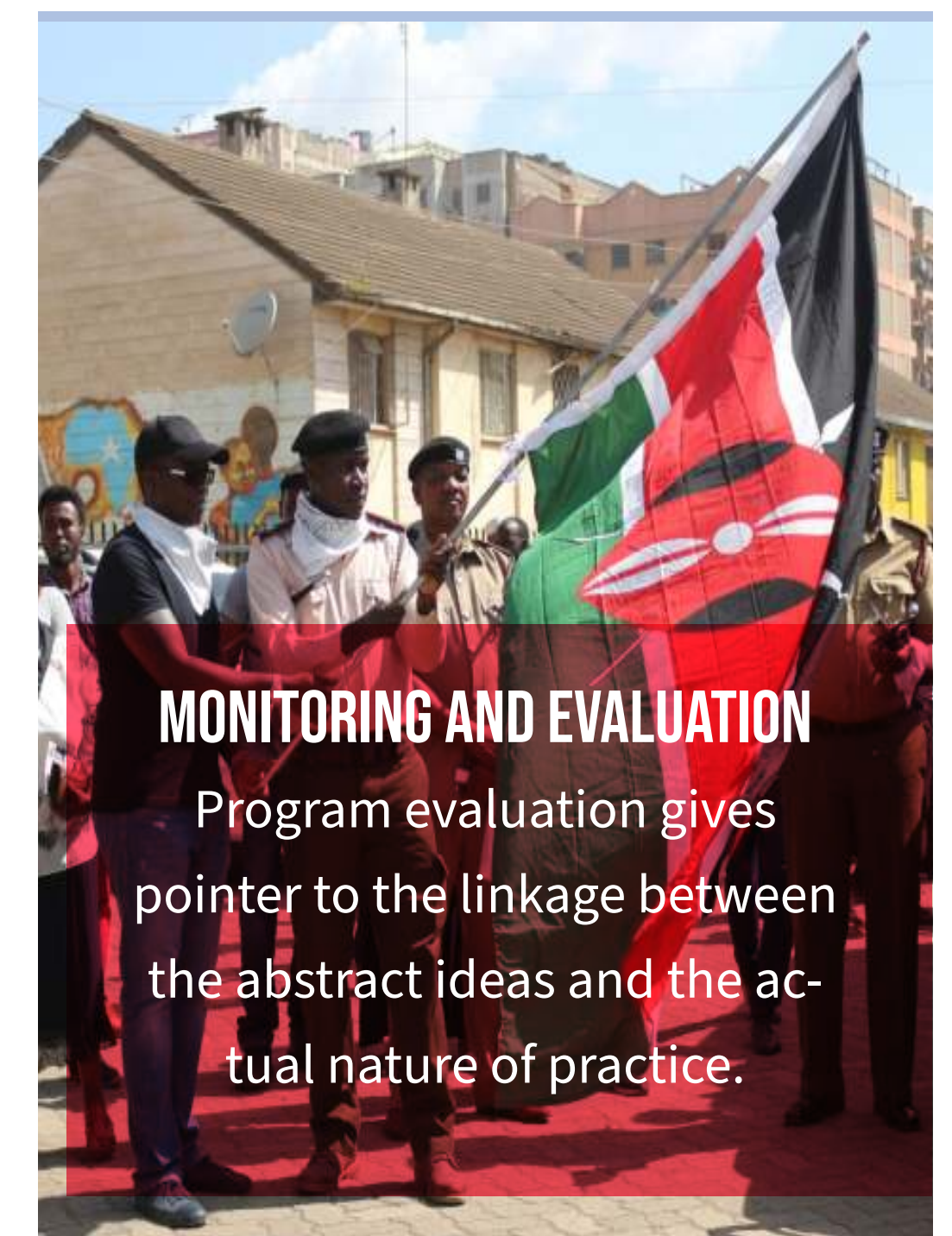
CAPACITY BUILDING

We focus on establishing capabilities for start ups in the non-profit sector, devolved governments, community-based organizations.



PROJECT MANAGEMENT

We are committed to a well-structured, people-centered, and context-aware approach to the management of projects across its thematic areas.



MONITORING AND EVALUATION

Program evaluation gives pointer to the linkage between the abstract ideas and the actual nature of practice.

VALUE PREPOSITION

OUR PROMISE TO PARTNERS

we are committed to providing sustainable options to all our clients.

Evident Gaps

- ◆ The series of global measures are not easily generalizable as they focus on individuals and in most cases have high value VE convicted targets
- ◆ Not all that exhibit one or more potential risks necessarily engage or experience radicalisation leading to violent extremism or terrorism
- ◆ The tools do not adequately and empirically identify a list of protective factors that can prevent the engagement in extremist violence
- ◆ Existing tools include errors arising from human judgement, validity, suboptimal weighting and inability to detect the low occurrences from VE

1

INTEGRITY

Our staff uphold the highest standards of integrity in all of our actions which is exemplified in our client engagements.

2

ETHICS

We are accountable for delivering on our commitments, though ethically and industry approved standards.

3

PROFESSIONALISM

We provide outstanding and unsurpassed service that, together, deliver premium value to our clients and partners.

4

INNOVATION

We focus on the user and constantly innovate to respond to their dynamic needs and changing environment.



GOAL ACHIEVEMENT

Our work is measured by the feedback from our clients and partners and the impact to the communities we serve.

WE SERVE OUR CLIENTS TO IMPACT THE COMMUNITY



Communities respond through the policy and program gains from our work.

OUR ACHIEVEMENT

THE RESEARCH PARTNER FOR THE HORN OF AFRICA



OUR STRATEGIC FOCUS IS TO ENGAGE OUR CLIENTS AND PARTNERS AT THEIR SPECIFIC POINTS OF NEED.



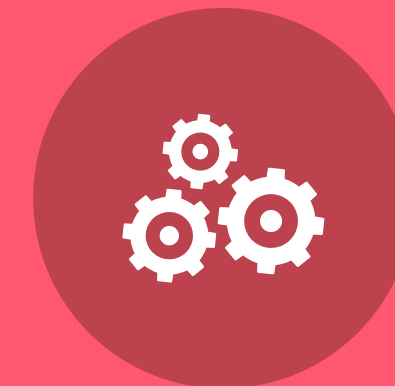
OVER 1,000 COMMUNITIES TRAINED ON CONFLICT MANAGEMENT, PROGRAM MANAGEMENT AND MONITORING & EVALUATION



OVER 6,000 PRACTITIONERS RECEIVING MONTHLY UPDATES ON OUR WORK GLOBALLY



200 EVIDENCED SUCCESS STORIES FROM PROGRAM IMPLEMENTATION ACTIVITIES IN THE HORN OF AFRICA



OVER 20 ORGANISATIONS USING OUR EVALUATION AND RESEARCH PRODUCTS IN THE HORN OF AFRICA

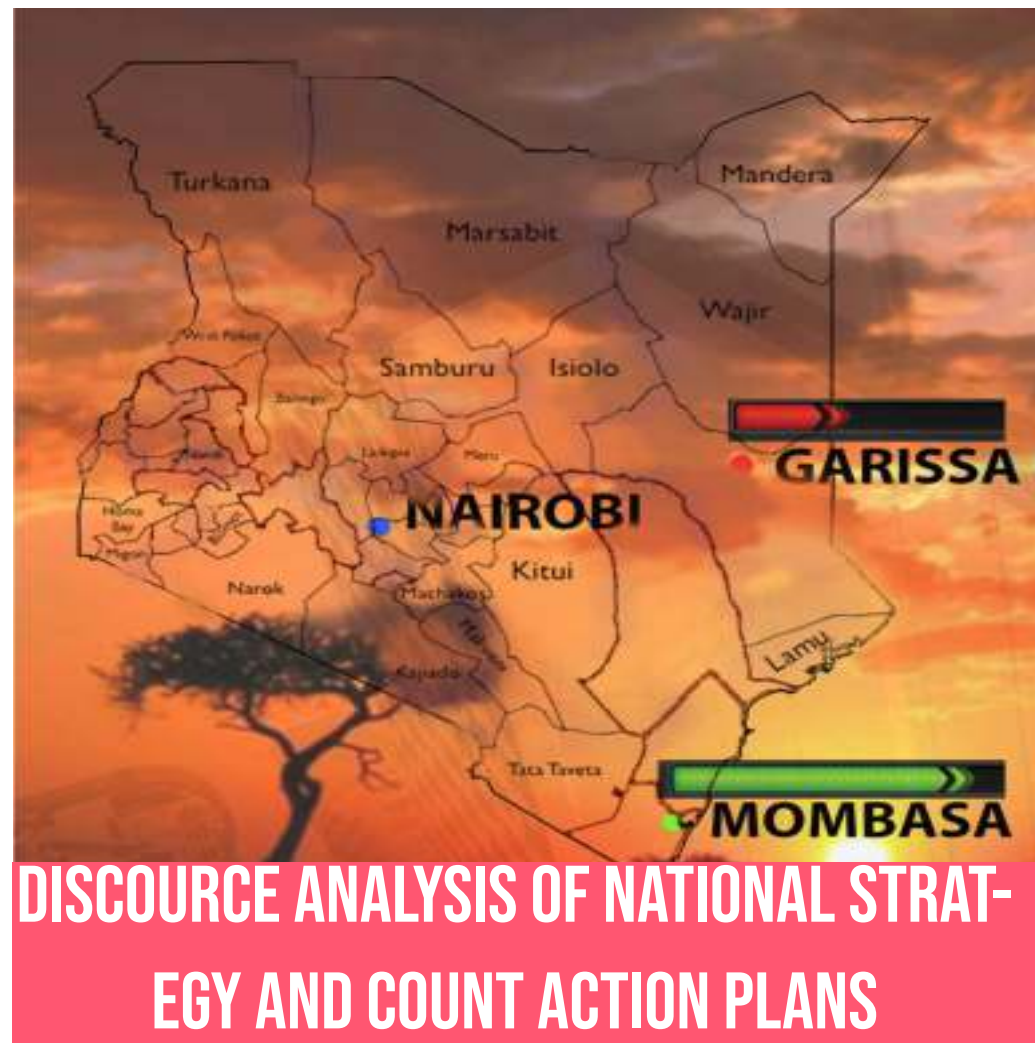


INTERACT WITH OUR WORK



OUR WORK

We provide reports, policy briefs and articles that touch on development issues in the Horn of Africa. Logon to our site to read more.....



REPORT COVERING A DISCOURSE ANALYSIS OF THE POLICES TO PREVENT AND RESPOND TO VIOLENT EXTREMISM IN KENYA



REPORT COVERING INDEX DEVELOPMENT TO PREVENT AND COUNTER VIOLENT EXTREMISM



PROGRAM IMPLEMENTATION REPORT COVERING TWO YEARS OF ACTIVITIES TO BRIDGE THE GAP BETWEEN THE POLICE AND COMMUNITIES.



PROGRAM EVALUATION TO THE TWO YEAR MULTI COUNTY ACTIVITY IN KENYA



SEE OUR PARTNERS



OUR PARTNERS

We work with diverse partners and clientelle base
accross the Horn of Africa



COFFEY INTERNAITONAL



SEARCH FOR COMMON
GROUND



USAID



US STATE DEPARTMENT



DDP



REINVENT



LIFE AND PEACE INSTITUTE



NIWETU



ACT!



JESUIT HAKIMANI CENTRE

PREVIOUS PARTNERS



UNITED STATES INSTITUTE
OF PEACE



TAWAKAL



ELECT AFRICA WOMEN
FOUNDATION



LITERATE KENYA



JCCP

CONTACT US

For additional information on what we do and what we offer, feel free to reach us

WEBSITE

www.scofieldassociates.co.ke

CALL

+254 020 786 8306
+254 0731055345

EMAIL

communications@scofieldassociates.co.ke

OFFICE

4th floor WUYI plaza,
Galana road- Kilimani

FACEBOOK

Scofield-Associates

LINKEDIN

scofieldassociates

TWITTER

S_Associates_Ke



**The Horn of Africa
Research Patner**



THANK YOU

WWW.SCOFIELDASSOCIATES.CO.KE

SCOFIELD
ASSOCIATES LIMITED